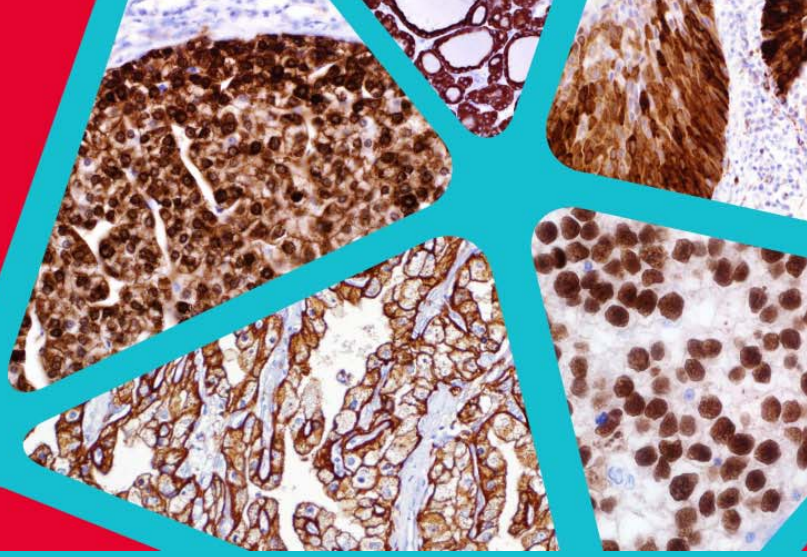


**High quality
Antibodies**



 CELL MARQUE

 Millipore
SIGMA

TOP ABACUS DX PRODUCTS

SOX-10 (EP268)
Control Slides (polyclonal)
PAX-8 (MRQ-50)
PAX-5 (SP34)
Ki-67 (SP6)
CD4 (SP35)
DOG1 (SP31)
PAX-8 (MRQ-50)
CD10 (56C6)
GATA3 (L50-823)
BCL2 (SP66)
Cytokeratin Cocktail (AE1 & AE3)
Cyclin D1 (SP4)
Ki-67 (SP6)
CDX-2 (EPR2764Y)
P504s (13H4)
Podoplanin (D2-40)
c-Myc (EP121)
C4d (SP91)
PD-1 (NAT105)
PMS2 (MRQ-28)

TOP CELL MARQUE PRODUCTS

PAX-8 (MRQ-50)
Ki-67 (SP6)
GATA3 (L50-823)
Estrogen Receptor (SP1)
CD10 (56C6)
Cyclin D1 (SP4)
P504s (13H4)
Her2/Neu (SP3)
CDX-2 (EPR2764Y)
CD4 (SP35)
CD117, c-kit (Y145)
Cytokeratin Cocktail (AE1 & AE3)
Control Slides (polyclonal)
c-Myc (EP121)
Podoplanin (D2-40)
PMS2 (MRQ-28)
Glypican-3 (1G12)
Detection & Chromogens (HIDEF HRP)

Distributed by Abacus DX

1800 222 287 | info@abacusdx.com | www.abacusdx.com

abacus dx